

canopsis

Open Source Hypervision

Product Presentation



What are the benefits?



All-in-one console



Operational simplification



Reduction of the alarm quantity



Relevant display of alarms



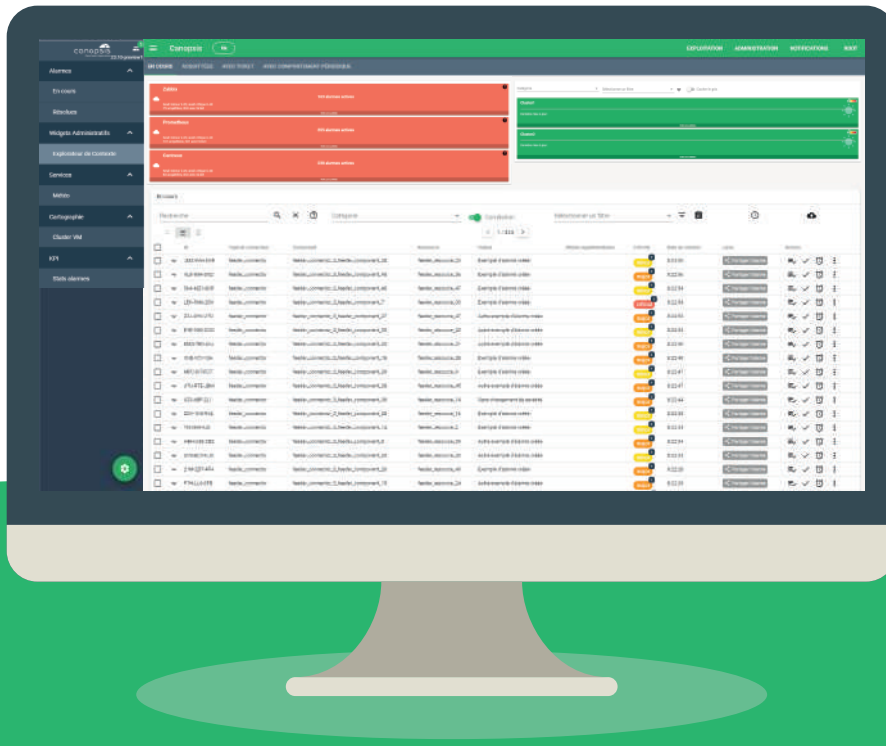
Global vision with indicators

How does it work?

Aggregate

Multisource event centralization

Monitoring solutions, logs, ticketing tools, EUE scenario results, repositories, ITSM, CMDB, business applications...



Process

Triggering of automatic, semi-automatic and user actions
Event filters, enrichment, correlation, remediation, ticketing...

Restitute

Fully customizable monitoring tools and dashboards in real and delayed time
Alarm lists and counters, maps, metrology, KPIs, statistics...

Canopsis editions

	Community Edition	Pro Edition
Aggregate		
Technical and application monitoring	✓	✓
Business data	✓	✓
Infrastructure (logs, databases, metrology...)	✓	✓
API	✓	✓
Repositories drivers / ITSM		✓
Process		
Scheduled actions	✓	✓
Planning	✓	✓
Idle rules	✓	✓
Dependency trees	✓	✓
Enrichment	⚠	✓
Event filter (compliance checking, firewall and deduplication)	⚠	✓
Correlation / Meta alarm		✓
Ticketing		✓
Remediation / Autoremediation		✓
Restitute		
Pilot view		
Alarm list (acknowledgement, ticket and alarm management, timeline, escalation, notifications...)	✓	✓
Notification	✓	✓
Planning / Periodic behaviors	✓	✓
Dependency trees	✓	✓
Remediation		✓
Maps		✓
Administrator view		
Entity SLI	✓	✓
Dependency trees	✓	✓
Calendar	✓	✓
Management rules (filtering, enrichment, inactivity...)	⚠	✓
Use of APIs (planning, webhooks, enrichments...)	⚠	✓
Healthcheck		✓
Application manager view		
Service weather	✓	✓
Alarm counters	✓	✓
Metrology	✓	✓
Entity SLI / SLA calculation	✓	✓
Dependency trees	✓	✓
Calendar	✓	✓
Statistics / KPIs		✓
Maps		✓
View by technical domain (business, functional...)		✓
Platform performance and availability		
Platform high availability		✓
Smart feeder		✓
Data bus redundancy (high-performance event processing)		✓
Traffic replication from sources (Y connector)		✓

✓ Available feature
 ⚠ Limited feature
 Unavailable feature

The offers



	8 / 5 Offer Unlimited cases Working Hours - WH -	24 / 7 Offer Unlimited cases Working Hours & Non Working Hours - WH + NWH -
Perimeter: 1 Canopsis platform with 1 Preproduction + 1 Production	✓	✓
Number of incidents over the period	Unlimited	Unlimited
Number of simultaneous users	Unlimited	Unlimited
Support availability	8 x 5	24 x 7
Response time	2 hours	2 hours
Remote troubleshooting	✓	✓
Update provision (excluding installation) and maintenance	✓	✓
L1 support	✗	✗
L2 support	✓	✓
L3 support	✓	✓
Hotline	✓	✓
Interface for reporting and incident management	✓	✓
Answer in French	✓	✓
Answer in English	✓	✓
Dedicated technical manager	✓	✓

At your disposal!



Armand DISSAUX
North Branch Manager

+33 (0)6 72 48 13 12
adissaux@capensis.fr



Edouard HUAULT
CEO

+33 (0)6 03 24 19 06
ehuault@capensis.fr



West Branch

16 Rue la Tour d'Auvergne
44200 Nantes



North Branch - Headquarter

229 Rue Solférino
59000 Lille

03 59 39 13 40
contact@capensis.fr



Center Branch

8 Rue Gamard
37300 Joué-lès-Tours